

PHR.HM

07/06/2019

Phuoc Hoa Rubber JSC

Country: Vietnam
 Exchange: HOCHIMINH STOCK EXCHANGE
 Industry: Automobiles & Auto Parts
 Sector: Consumer Discretionary
 Market Cap Currency: VND

General Information (Currency: VND)

Price (Previous Close):	58,000	Beta 5 Year: (Vietnam Index)	0.41
Price - 52 Week High:	63,000	Dividend Yield (Indicated):	4.7%
Price - % Below High:	-7.9%	Shares Outstanding (ML):	135
Price - 52 Week Low:	17,291	Float Shares (ML):	45
Price - % Above Low:	235.4%	Float % of O/S:	33.0%
Median Price Target:	41,555	Market Capitalization (ML):	7,858,953
Implied Profit:	-28.4%	Enterprise Value (ML):	7,593,368

Consensus Recommendation

BUY



# of Analysts:	3
Upgrades Last 30 Days:	0
Downgrades Last 30 Days:	0

Estimates (Currency: VND)

Period	Sales (ML)			Est. 30 30 Days Ago	EBITDA (ML)			Est. 30 30 Days Ago	EPS			Est. 30 30 Days Ago
	Mean Est.	High Est.	Low Est.		Mean Est.	High Est.	Low Est.		Mean Est.	High Est.	Low Est.	
FY0 (Actual)	1,557,797				NULL				5,924.00			
FY1 (Current Year)	1,567,866	1,740,000	1,383,755	1,567,866	237,000	261,000	213,000	237,000	6,049.33	8,856.00	3,465.00	6,049.33
% above/below mean			11.0%	-11.7%	0.0%	10.1%	-10.1%	0.0%		46.4%	-42.7%	0.0%
FY2 (Next Year)	1,531,700	1,594,073	1,469,327	1,531,700	158,000	158,000	158,000	158,000	6,253.00	6,253.00	6,253.00	6,253.00
% above/below mean			4.1%	-4.1%	0.0%	0.0%	0.0%	0.0%		0.0%	0.0%	0.0%

Valuation Ratios

Period	P/E	P/SALES	EV/REVS	EV/EBITDA
LTM (Last Twelve Months)	19.2x	4.8x	4.7x	27.9x
FY1 (Current Year)	9.6x	5.0x	4.8x	32.0x
FY2 (Next Year)	9.3x	5.1x	5.0x	48.1x

FY0 Per Share Metrics (Currency: VND)

Cash&STInv:	5,215	Sales:	11,589
Total Debt:	3,724	Cash Flow:	5,266
WorkingCap:	4,327	Free CF:	774
Book Value:	19,457	Dividends:	1,900

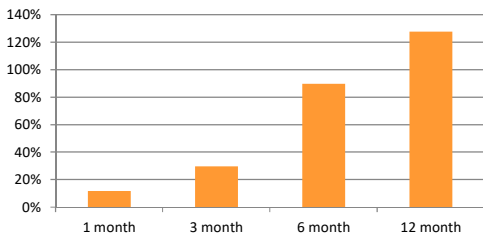
FY0 Employee Data

# of Emp:	NULL
Emp Grth:	NULL
Rev/Emp:	NULL
5 yr Avg:	NULL

Abbreviated Financials (Currency: VND)

Income Statement (ML)	FQ0	FQ-4	%	Balance Sheet (ML)	FQ0	FY0	%	Cash Flow Statement (ML)	FQ0	FY0
Sales	291,630	268,048	8.8%	Cash & ST Investments	837,508	706,690	18.5%	Net Income	NULL	NULL
Gross Income	71,915	47,278	52.1%	Fixed Assets	2,450,925	2,406,513	1.8%	Funds From Operations	0	0
EBITDA	65,524	42,834	53.0%	Total Assets	5,222,997	5,087,330	2.7%	Cash From Operations	193,704	468,443
EBIT	48,199	29,014	66.1%	Current Liabilities	596,756	782,597	-23.7%	Capital Expenditures	-73,495	-175,516
Pretax Income	135,951	113,767	19.5%	LT Debt	402,669	377,365	6.7%	Cash From Investments	-129,076	-72,665
Net Income	104,870	92,398	13.5%	Total Liabilities	2,498,949	2,471,930	1.1%	Cash Dividends Paid	-70,720	-188,910
Common Shares	135	131	3.6%	Total Shareholders Equity	2,724,049	2,615,400	4.2%	Cash From Financing	-83,843	-274,073

Review of Stock Performance



Profitability

	LTM	5 Year Avg
Gross Margin	20.4%	16.1%
R/D % Sales	NaN	NaN
SGA % Sales	7%	7%
EBITDA Margin	18.2%	12.8%
Operating Margin	24.2%	15.1%
Pretax Margin	52.3%	28.1%
Net Margin	37.0%	23.0%
CF/Sales	48%	27%
Tax Rate	16.4%	18%
ROA	13.9%	8.7%
ROE	24.6%	14.1%

FY0 Sales By Region

Region	Sales
NULL	NULL

Price Chart (Currency: VND)

